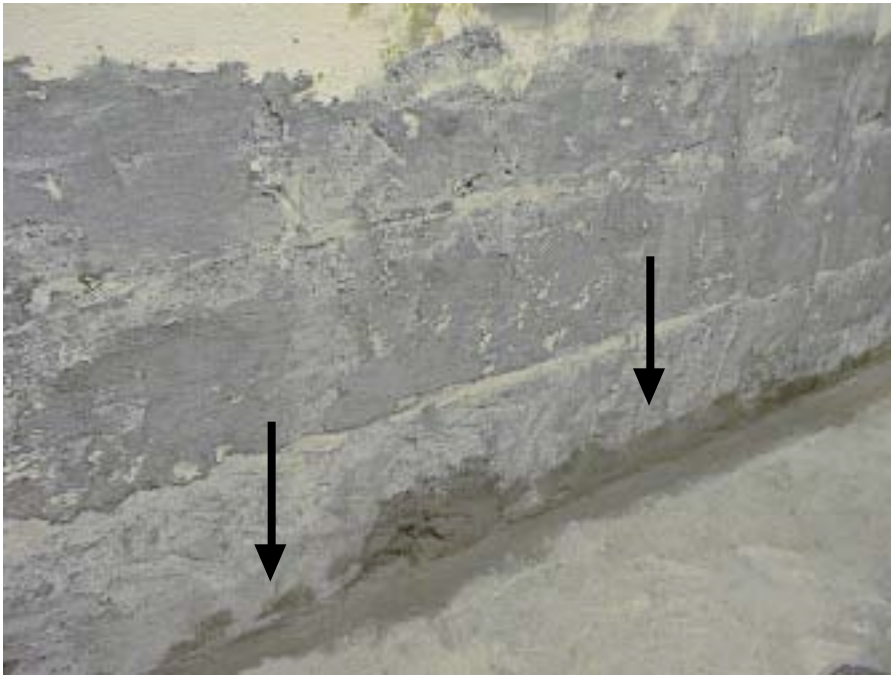


Project Profile Masonry Waterproofing



When this hotel converted the room on the OUTSIDE of this wall into a pot wash area, they created a huge problem on the INSIDE of the wall. Because



of the constant standing water on the opposite side of the wall the hotel manager's office (located on the inside) began to encounter water intrusion through the masonry wall. Every time the hotel tried commonly available "waterproofing" products they had to remove the dry wall and carpeting, apply the product and hope it worked. They repeated this process five times over the course of six years with the same result - water continued to find its

way through the so called "water proof" product, They were very skeptical when **ADVANCED Polymer Repairs** said they could solve the problem. Working with hotel maintenance staff, **ADVANCED** supervised the repair. Five years later and the hotel has not experienced any problems. May we help you with your problems?

We Solve Your Toughest Surface Protection,
Repair and Maintenance Problems
On Budget... On Time... Every Time™

ADVANCED
Polymer Repairs™

856-691-7343